

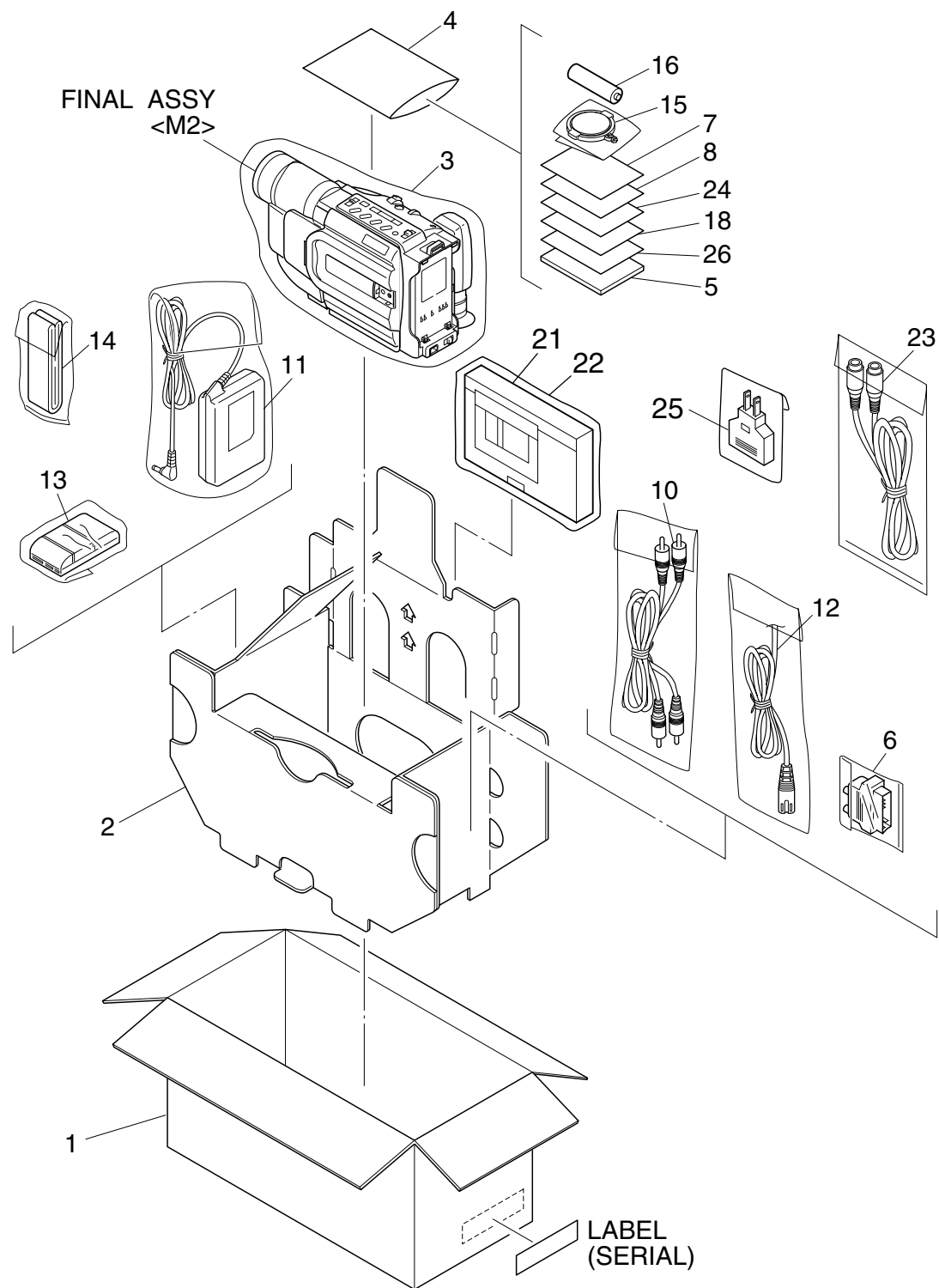
SECTION 5
PARTS LIST

SAFETY PRECAUTION

Parts identified by the ⚠ symbol are critical for safety. Replace only with specified part numbers.

5.1 PACKING AND ACCESSORY ASSEMBLY <M1>

The instruction manual to be provided with this product will differ according to the destination.



#	△ REF No.	PART No.	PART NAME, DESCRIPTION

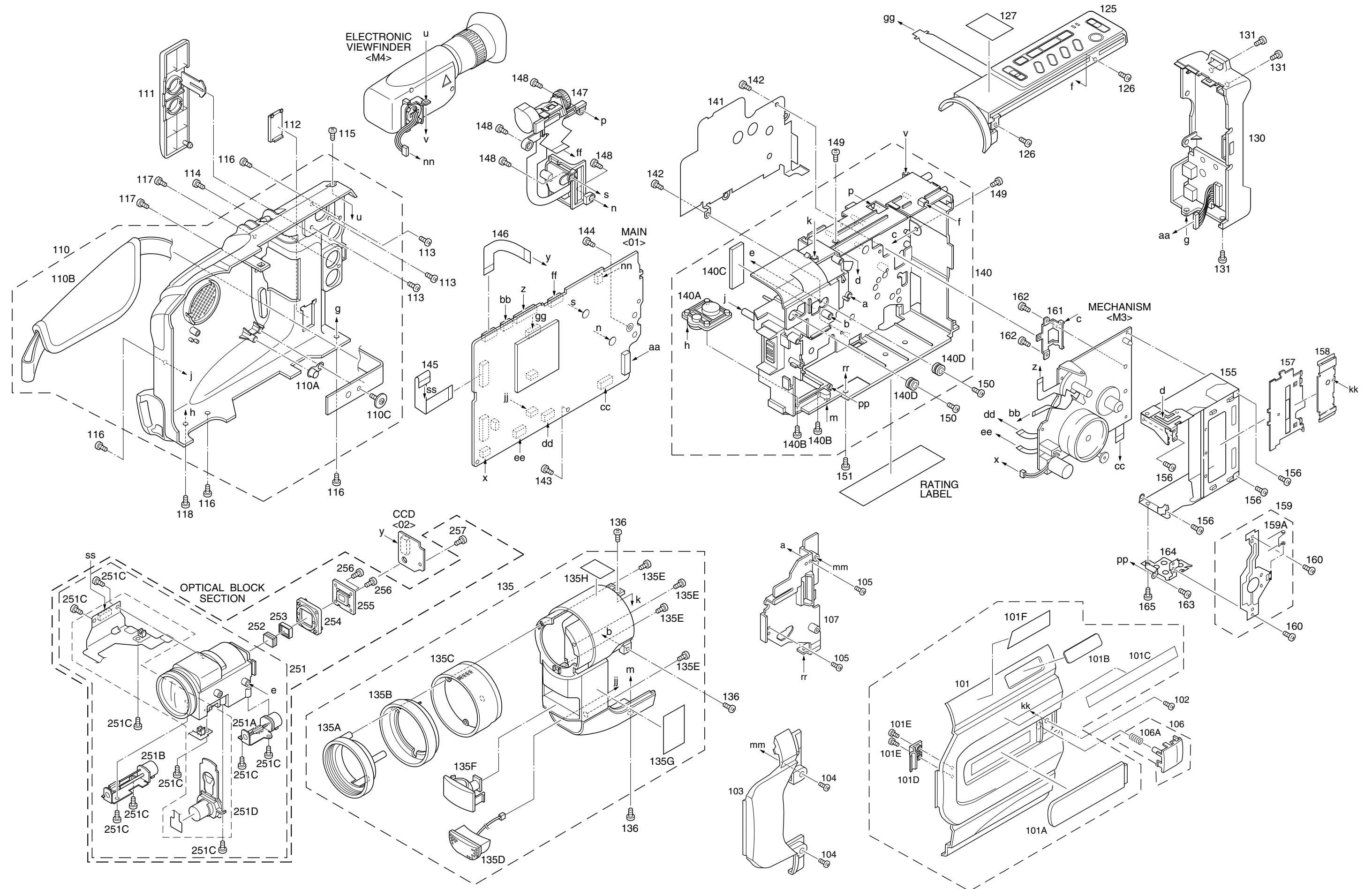
PACKING AND ACCESSORY ASSEMBLY <M1>

1	LY32179-001A	PACKING CASE,A,B,C,D
	LY32179-003A	PACKING CASE,H
	LY32563-019A	PACKING CASE,F
	LY32563-021A	PACKING CASE,G
	LY32563-023A	PACKING CASE,E
2	LY32553-001A	CUSHION
3	LY30023-002A	POLY BAG
4	QPA02003506	POLY BAG,A,B,C,E,F,G,H
	YQM30061-3	POLY BAG,D
△ 5	LYT0860-002A	INST.BOOK(GE),B
△	LYT0860-002B	INST.BOOK(GE),A
△	LYT0860-003B	INST.BOOK(FR),A
△	LYT0860-004B	INST.BOOK(DU),A
△	LYT0860-005B	INST.BOOK(SP),A
△	LYT0860-006B	INST.BOOK(IT),A
△	LYT0860-007A	INST.BOOK(DA),B
△	LYT0860-008A	INST.BOOK(FI),B
△	LYT0860-009A	INST.BOOK(SW),B
△	LYT0860-010A	INST.BOOK(NO),B
△	LYT0860-011A	INST.BOOK(RU),C
△	LYT0860-012A	INST.BOOK(CZ),C
△	LYT0860-013A	INST.BOOK(PO),C
△	LYT0860-014A	INST.BOOK(HU),C
△	LYT0861-001B	INST.BOOK(EN),D
△	LYT0863-001B	INST.BOOK(FR),H
△	LYT0868-001A	INST.BOOK(EN),F,G
△	LYT0868-002A	INST.BOOK(CH),F,G
△	LYT0868-003A	INST.BOOK(RU),F,G
△	LYT0868-004A	INST.BOOK(AR),F,G
△	LYT0903-001A	INST.BOOK(EN),E
△	LYT0903-002A	INST.BOOK(CH),E
△	LYT0903-003A	INST.BOOK(RU),E
6	PEMC1174	CONNECTOR,CABLE ADAPTER,VC-V3595E,A,B,C,D,H
7	BT-54008-2	GUARANTY CARD,D,H
8	BT-54013-2	WARRANTY CARD,A,B,C
	BT-59011-2	WARRANTY CARD,E
10	PEAC0362-150	CABLE ASSY,AUDIO/VIDEO CABLE
△ 11	LY20847-001B	AC ADAPTER,AP-V12EG,A,B,C,D,F,G,H
△	LY20847-002A	AC ADAPTER,AP-V12ED,E
△ 12	QMPL120-190-JR	POWER CORD,A,B,C,F,H
△	QMPP110-190-JR	POWER CORD,D
△	QMPS110-190-JR	POWER CORD,G
△	QMPS120-190-JR	POWER CORD,E
△ 13	YQ10629E	BATTERY PACK,BN-V11U-E,A,B,C,D,E,F,G
△	YQ10629F	BATTERY PACK,BN-V11U-F,H
14	LY20186-001A	SHOULDER STRAP
15	LY43388-001A	LENS CAP
16	-	BATTERY,AA(R6),E,F,G
18	BT-59012-1	GUARANTY CARD,E
21	YQ31963B-3	CASSETTE ADAPTER,E,F,G
22	YQ43446	POLY BAG,E,F,G
23	QAM0004-003	S CABLE,H
△ 24	LYT0609-001A	SHEET(CON.PLUG),F,G
△ 25	PEMC1012	CONVERSION PLUG,G
△	PEMC1012-02	CONVERSION PLUG,F
26	LYT0194-001B	Q.CARD(JUK),D

MODEL	MARK
GR-FX14EG-X	A
GR-FX14EG-Y	B
GR-FX14EG-Z	C
GR-FX14EK	D
GR-SX37ED	E
GR-SX140A	F
GR-SX140A-S	G
GR-SX18EG-F	H

- INSTRUCTIONS
- GE GERMANY
 - FR FRENCH
 - DU DUTCH
 - SP SPANISH
 - IT ITALIAN
 - DA DANISH
 - FI FINNISH
 - SW SWEDISH
 - NO NORWEGIAN
 - RU RUSSIAN
 - CZ CZECH
 - PO POLISH
 - HU HUNGARIAN
 - EN ENGLISH
 - CH CHINESE
 - AR ARABIC

5.2 FINAL ASSEMBLY <M2>



#	△	REF No.	PART No.	PART NAME, DESCRIPTION

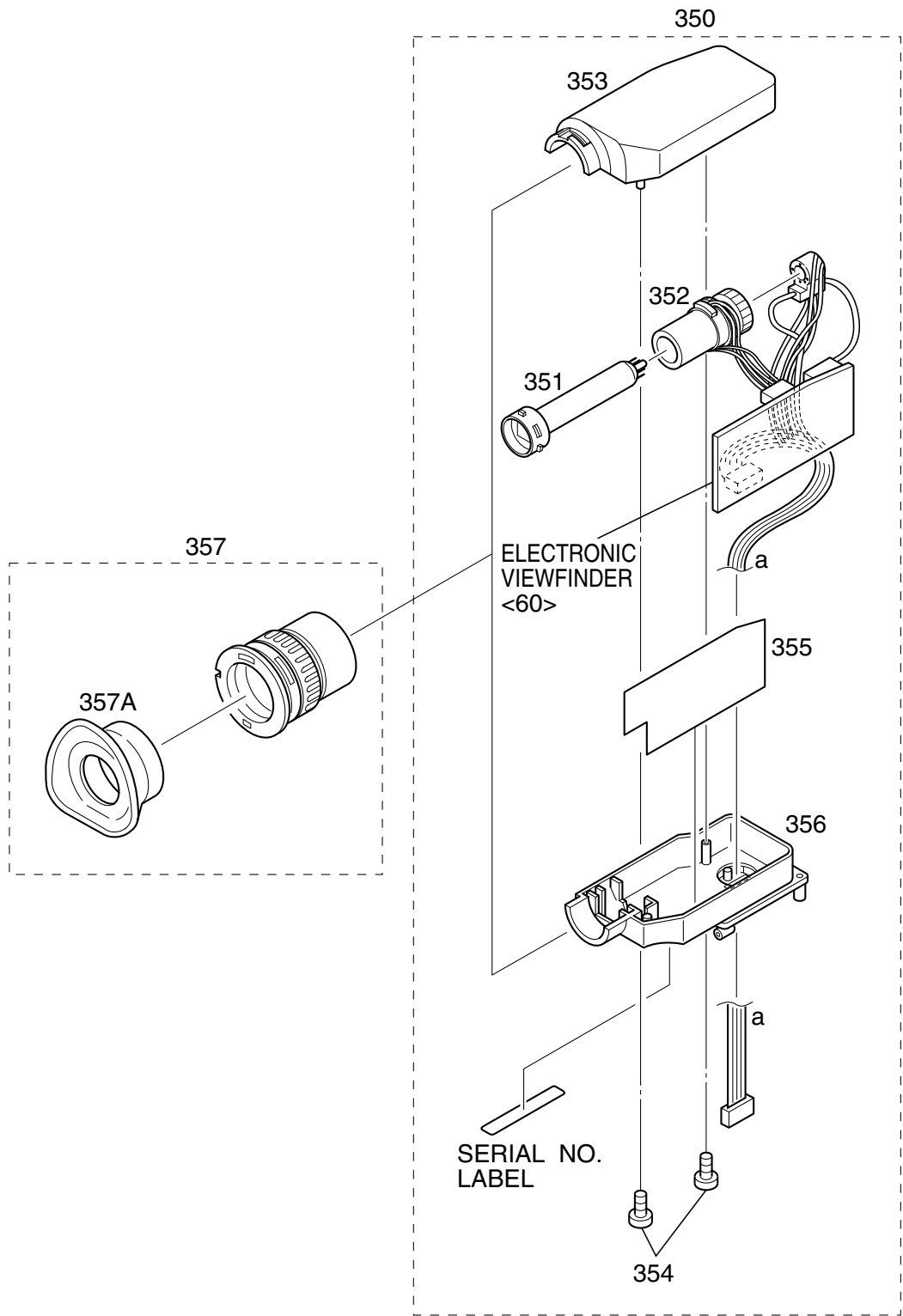
FINAL ASSEMBLY <M2>				
101			LY20680-015A	CASSETTE COVER(S)ASSY,A,B,D
			LY20680-016A	CASSETTE COVER(S)ASSY,F,G,H
			LY20680-020A	CASSETTE COVER(S)ASSY,E
			LY20680-023A	CASSETTE COVER(S)ASSY,C
101A			LY32405-001A	PLATE(WINDOW S),A,B,C,D
			LY32405-002A	PLATE(WINDOW S),E,F,G,H
101B			LY42883-001A	MARK
101C			LY32562-002A	STICKER(B),F,G,H
			LY32562-004A	STICKER(B),A,B,C,D,E
101D			LY32024-001B	HINGE(CASSETTE COVER)
101E			QYSLSF2060D	SCREW,X2
101F			LY43537-001A	STICKER(E),C
102			QYSLSP2030D	SCREW
103			LY10272-016A	UPPER CASE(S),A,B,C,D
			LY10272-017A	UPPER CASE(S),H
			LY10272-019A	UPPER CASE(S),F,G
			LY10272-022A	UPPER CASE(S),E
104			QYSLSF2060D	SCREW,X2
105			QYSLSF2060D	SCREW,X2
106			LY32041-001E	BUTTON(PUSH)ASSY
106A			LY30002-049B	COMPRESSION SPRING
107			LY32038-001A	UPPER COVER(S)ASSY
110			LY20684-001B	LOWER CASE ASSY,A,B,C,D
			LY20684-020A	LOWER CASE ASSY,E,F,G,H
110A			LY40081-001A	CAP
110B			LY20682-001A	GRIP BELT
110C			LY30018-003A	SPECIAL SCREW
111			LY31945-003A	COVER(JACK)
112			LY31946-001A	COVER(JIG)
113			QYSLSF2050Z	SCREW,X3
114			QYSLSF2060D	SCREW
115			QYSLSF2060D	SCREW
116			QYSLSF2060D	SCREW,X4
117			QYSLSF2060D	SCREW,X2
118			QYSLSF2060D	SCREW
125			LY20614-004C	TOP OPERATION UNIT,A,B,C,D,F,G,H
			LY20614-014C	TOP OPERATION UNIT,E
126			QYSLSF2060D	SCREW,X2
127			LY32061-006A	STICKER(D),F,G
130			LY20615-006E	REAR UNIT
131			QYSLSF2060D	SCREW,X3
135			LY20683-030A	FRONT COVER ASSY,E
			LY20683-032A	FRONT COVER ASSY,A,B,C,D,F,G,H
135A			LY31937-001A	HOOD
135B			LY31938-001A	COVER(HOOD)
135C			LY31936-001A	RING
135D			LY32482-001A	MICROPHONE
135E			QYSLSF2060D	SCREW,X4
135F			LY30934-021A	COVER(LIGHT),A,B,C,D,F,G,H
			LY30934-022A	COVER(LIGHT),E
135G			LY32058-001A	STICKER(A)
135H			LY32060-005A	STICKER(C)
136			QYSLSF2060D	SCREW,X3
140			LY20832-002B	FRAME ASSY
140A			YQ31843	BASE
140B			QYSLSF2060D	SCREW,X2
140C			LY30029-0A4A	SPACER(A)
140D			LY41082-001A	CUSHION(OP),X2
141			LY32327-001A	SHIELD CASE(MAIN)
142			QYSPSPU1720Z	SCREW,X2
143			QYSLSF2060D	SCREW

#	△	REF No.	PART No.	PART NAME, DESCRIPTION
144			QYSLSF2060D	SCREW
145			WJT0072-001A	E-CARD WIRE,OP-MAIN CN15
146			QAL0389-001	FPC,MAIN CN22-CCD CN5301
147			LY20613-001B	ZOOM UNIT
148			QYSLSF2060D	SCREW,X4
149			LY41173-001A	SPECIAL SCREW,X2
150			LY30018-050A	SPECIAL SCREW,X2
151			QYSLSP2030D	SCREW
155			LY31808-001C	CASSETTE HOUSING FINAL ASSY
156			LY42722-003A	SCREW,X4
157			LY31294-001B	CASSETTE COVER INSIDE
158			LY32026-001B	BRACKET(C.C/S)
159			LY31790-001A	FRONT FRAME ASSY
159A			YQ44144-1-1	TAPE GUIDE
160			SPSH1725M	SCREW,X2
161			LY32326-001A	BRACKET(MECHA)
162			LY42722-003A	SCREW,X2
163			QYSLSF1750D	SCREW
164			LY31807-001A	SIDE BRACKET L
165			LY42722-003A	SCREW
- OPTICAL BLOCK SECTION -				
251			LY30948-003A	OP BLOCK ASSY
251A			PTY30948-002	FOCUS MOTOR
251B			PTY30948-301	ZOOM MOTOR
251C			PTY30151-016	TAPPING SCREW,X9
251D			PTY30948-006	IRIS MOTOR UNIT
252			LY43383-001A	OPTICAL LPF
253			LY31370-001A	SPACER RUBBER
254			LY20497-001A	CCD SPACER
255			LYH30374-001A	CCD BASE ASSY
256			QYSPSGU2080Z	SCREW,X2
257			LY30018-072A	SPECIAL SCREW

BEWARE OF BOGUS PARTS

#	△	REF No.	PART No.	PART NAME, DESCRIPTION	#	△	REF No.	PART No.	PART NAME, DESCRIPTION
*****					454		LY42755-001A		WASHER
					455		LY31924-001A		TAKE UP GEAR
					456		LY42738-001A		BRAKE SUB GEAR
					457		LY42754-003A		SLIT WASHER,X3
					458		LY42544-001B		A/C HEAD UNIT
					459		SPSN1750Z		SCREW,X2
					460		LY42517-001A		EJECT LEVER ASSY
					461		LY42754-003A		SLIT WASHER
					462		YQ31833-1-1		LED GUIDE
					463		LY42722-001A		SCREW
					464		LY42729-001A		DRUM SPACER
					465		LY42722-001A		SCREW,X2
					466		QSW0888-001		ROTARY ENCODER,A,B,C,D
							QSW0888-002		ROTARY ENCODER,E,F,G,H
					467		LY42722-002A		SCREW,X4
					468		LY31814-001A		LINK LEVER
					469		YDV2099A		DRUM ASSY
					469A		YDM1003-1-5		CATCHER
					469B		QYSPSPU1735M		SCREW,X2
					470		LY42722-001A		SCREW,X2
					471		SPSH1740Z		SCREW,X2
					472		YU42051		BRUSH
					473		LY42722-003A		SCREW

5.4 ELECTRONIC VIEWFINDER ASSEMBLY <M4>



#	△	REF No.	PART No.	PART NAME, DESCRIPTION

ELECTRONIC VIEWFINDER ASSEMBLY <M4>

△	350	LY20701-009A	B/W VF ASSY
△	351	PEDP0193	CRT
△	352	QQD0026-001	DEFLECTION YOKE

#	△	REF No.	PART No.	PART NAME, DESCRIPTION
△	353		LY10165-001B	CASE(L)
	354		QYSPSGU1760M	TAP SCREW,X2
△	355		LY41280-001A	SHEET(SHIELD)
△	356		PTY20701-011	BOTTOM CASE ASSY
	357		PTY20374-201	LENS ASSY
	357A		LY20411-001A	EYE CAP

5.5 ELECTRICAL PARTS LIST

MODEL	MARK	MODEL	MARK
GR-FX14EG-X	A	GR-SX37ED	E
GR-FX14EG-Y	B	GR-SX140A	F
GR-FX14EG-Z	C	GR-SX140A-S	G
GR-FX14EK	D	GR-SX18EG-F	H

△ REF No. PART No. PART NAME, DESCRIPTION

MAIN BOARD ASSEMBLY <01>

PW1	YB10356ED1-01	MAIN BOARD ASSY,A,B,C,D
	YB10356EE1-01	MAIN BOARD ASSY,E,F,G,H
IC101	UPD703039-038	IC(MICRO C ROM)
	or UPD70F3040-038	IC(MICRO C ROM)
IC102	AT25080N-10SC-X	IC
	or CAT25C08SI	IC
	or X25170S8I-2.5-X	IC
	or 25LC080-I/SN-X	IC
IC103	RS5C314	IC
IC104	IC-PST3427U-X	IC
IC105	TC7S66FU	IC(DIGITAL),G
△ IC1601	LB11951WA-MPB	IC
IC1602	TA75S393F	IC
IC2001	MC74AC04DT	IC
	or TC74AC04FT	IC(DIGITAL)
IC3501	HA118224F	IC
IC4001	JCY0140-3	IC
IC4003	UPD6467GR-512-X	IC(MICRO C ROM)
IC4201	BA10324AF-XE	IC
IC4202	BA10324AF-XE	IC
IC4501	UPD16835AGS	IC
IC4701	MM1512XN	IC,A,B,C,D
IC4702	BA7665FS	IC,E,F,G,H
IC5201	HD49326BF	IC
IC5202	JCY0098	IC
IC6001	FA7706F	IC
IC6801	S-814A33AUC-W	IC
Q101	2SA1774/RS/-X	TRANSISTOR
	or 2SA1836/6-7/-X	TRANSISTOR
Q102	DTC144EE	TRANSISTOR
	or UN9213J	TRANSISTOR
	or RN1104	TRANSISTOR
Q103	2SC4617/QR/-X	TRANSISTOR
	or 2SC4783/5-6/-X	TRANSISTOR
Q104	DTC144EE	TRANSISTOR
	or RN1104	TRANSISTOR
	or UN9213J	TRANSISTOR
Q105	2SA1774/RS/-X	TRANSISTOR
	or 2SA1836/6-7/-X	TRANSISTOR
Q108	DTC114EE	TRANSISTOR
	or RN1102	TRANSISTOR
	or UN9211J	TRANSISTOR
Q109	DTC114EE	TRANSISTOR
	or RN1102	TRANSISTOR
	or UN9211J	TRANSISTOR
Q1601	2SC4617/QR/-X	TRANSISTOR
	or 2SC4783/5-6/-X	TRANSISTOR
Q2001	DTA114TE	TRANSISTOR
Q2007	PUMX1	PAIR TRANSISTOR
	or UMX1N	PAIR TRANSISTOR
	or HN1C01FU/G/-X	PAIR TRANSISTOR
Q2008	PUMT1	PAIR TRANSISTOR
	or HN1A01FU/G/-X	PAIR TRANSISTOR
Q2021	DTC144EE	TRANSISTOR
	or RN1104	TRANSISTOR
	or UN9213J	TRANSISTOR
Q2022	DTC144EE	TRANSISTOR
	or RN1104	TRANSISTOR
	or UN9213J	TRANSISTOR
Q2023	2SC4617/QR/-X	TRANSISTOR

△ REF No. PART No. PART NAME, DESCRIPTION

	or 2SC4783/5-6/-X	TRANSISTOR	
Q2071	2SC4617/QR/-X	TRANSISTOR	
	or 2SC4783/5-6/-X	TRANSISTOR	
Q3501	HN1C01FU/G/-X	PAIR TRANSISTOR	
Q3502	HN1C01FU/G/-X	PAIR TRANSISTOR	
Q3505	DTC144EE	TRANSISTOR,E,F,G,H	
	or RN1104	TRANSISTOR,E,F,G,H	
	or UN9213J	TRANSISTOR,E,F,G,H	
Q3901	HN1A01FU/G/-X	PAIR TRANSISTOR	
Q4001	DTC144EE	TRANSISTOR,E,F,G,H	
	or RN1104	TRANSISTOR,E,F,G,H	
	or UN9213J	TRANSISTOR,E,F,G,H	
Q4201	2SC4617/QR/-X	TRANSISTOR	
	or 2SC4783/5-6/-X	TRANSISTOR	
Q4202	2SC4617/QR/-X	TRANSISTOR	
	or 2SC4783/5-6/-X	TRANSISTOR	
Q4251	RPM-22PB	PHOTO TRANSISTOR	
Q4501	DTC114EE	TRANSISTOR	
	or RN1102	TRANSISTOR	
	or UN9211J	TRANSISTOR	
Q4701	2SA1774/QR/-X	TRANSISTOR	
	or 2SA1836/5-6/-X	TRANSISTOR	
Q4702	2SA1774/QR/-X	TRANSISTOR	
	or 2SA1836/5-6/-X	TRANSISTOR	
Q6101	SSM5G01TU	MOS FET	
Q6201	SSM5G01TU	MOS FET	
Q6301	FDC6506P	MOS FET	
Q6401	SSM5G01TU	MOS FET	
Q6501	SSM5G01TU	MOS FET	
Q6608	DTC144EE	TRANSISTOR	
	or RN1104	TRANSISTOR	
	or UN9213J	TRANSISTOR	
Q6701	TPC6102	MOS FET	
Q6702	2SC4097/QR/-X	TRANSISTOR	
	or 2SC4173/3-4/-X	TRANSISTOR	
Q6802	DTA113ZUA	TRANSISTOR	
Q6811	2SA1577/QR/-X	TRANSISTOR	
	or 2SA1608/3-4/-X	TRANSISTOR	
Q7301	2SA1774/QR/-X	TRANSISTOR	
	or 2SA1836/5-6/-X	TRANSISTOR	
Q7310	CPH3101	TRANSISTOR	
Q7311	2SC4617/QR/-X	TRANSISTOR	
	or 2SC4783/5-6/-X	TRANSISTOR	
△ D101	SB007W03Q	SB DIODE	
D102	UDZS7.5B	ZENER DIODE	
D103	1SS355	DIODE	
D104	1SS355	DIODE	
D4001	DAN222	DIODE,E,F,G,H	
D5201	1SS355	DIODE	
D6301	MBR130	SB DIODE	
D6601	RB480Y	SB DIODE	
D6602	RB480Y	SB DIODE	
D6616	UDZS7.5B	ZENER DIODE	
D6701	CRS09	SB DIODE	
D6702	CRS09	SB DIODE	
R101	NRSA63J-104X	MG RESISTOR	100kΩ,1/16W
R102	NRSA63J-0R0X	MG RESISTOR	0Ω,1/16W
R103	NRSA63J-0R0X	MG RESISTOR	0Ω,1/16W
R105	NRSA63J-103X	MG RESISTOR	10kΩ,1/16W
R106	NRSA63J-102X	MG RESISTOR	1kΩ,1/16W
R107	NRVA63D-153X	CMF RESISTOR	15kΩ,1/16W
R108	NRVA63D-243X	CMF RESISTOR	24kΩ,1/16W
R109	NRVA63D-183X	CMF RESISTOR	18kΩ,1/16W
R110	NRSA63J-103X	MG RESISTOR	10kΩ,1/16W

#	△	REF No.	PART No.	PART NAME, DESCRIPTION	#	△	REF No.	PART No.	PART NAME, DESCRIPTION
R111			NRSA63J-273X	MG RESISTOR 27kΩ,1/16W	R1608			NRSA63J-154X	MG RESISTOR 150kΩ,1/16W
R112			NRSA63J-331X	MG RESISTOR 330Ω,1/16W	R1609			NRSA63J-471X	MG RESISTOR 470Ω,1/16W
R113			NRSA63J-562X	MG RESISTOR 5.6kΩ,1/16W	R1610			NRSA63J-104X	MG RESISTOR 100kΩ,1/16W
R114			NRSA63J-821X	MG RESISTOR 820Ω,1/16W	R1611			NRSA63J-153X	MG RESISTOR 15kΩ,1/16W
R115			NRSA63J-101X	MG RESISTOR 100Ω,1/16W	R1612			NRSA63J-153X	MG RESISTOR 15kΩ,1/16W
R117			NRSA63J-102X	MG RESISTOR 1kΩ,1/16W	R1613			NRSA63J-104X	MG RESISTOR 100kΩ,1/16W
R118			NRSA63J-103X	MG RESISTOR 10kΩ,1/16W	R1615			NRSA63J-152X	MG RESISTOR 1.5kΩ,1/16W
R119			NRSA63J-103X	MG RESISTOR 10kΩ,1/16W	R1616			NRSA63J-152X	MG RESISTOR 1.5kΩ,1/16W
R120			NRSA63J-273X	MG RESISTOR 27kΩ,1/16W	R1617			NRSA63J-153X	MG RESISTOR 15kΩ,1/16W
R121			NRSA63J-273X	MG RESISTOR 27kΩ,1/16W	R1618			NRSA63J-153X	MG RESISTOR 15kΩ,1/16W
R122			NRSA63J-393X	MG RESISTOR 39kΩ,1/16W	R1619			NRSA63J-334X	MG RESISTOR 330kΩ,1/16W
R125			NRSA63J-273X	MG RESISTOR 27kΩ,1/16W	R1620			NRSA63J-221X	MG RESISTOR 220Ω,1/16W
R126			NRSA63J-153X	MG RESISTOR 15kΩ,1/16W	R1621			NRSA63J-331X	MG RESISTOR 330Ω,1/16W
R127			NRSA63J-221X	MG RESISTOR 220Ω,1/16W	R1622			NRSA63J-221X	MG RESISTOR 220Ω,1/16W
R128			NRSA63J-102X	MG RESISTOR 1kΩ,1/16W	R1623			NRSA63J-0R0X	MG RESISTOR 0Ω,1/16W
R129			NRSA63J-102X	MG RESISTOR 1kΩ,1/16W	R1624			NRSA63J-333X	MG RESISTOR 33kΩ,1/16W
R130			NRSA63J-105X	MG RESISTOR 1MΩ,1/16W	R1625			NRSA63J-123X	MG RESISTOR 12kΩ,1/16W
R136			NRSA63J-474X	MG RESISTOR 470kΩ,1/16W	R1626			NRSA63J-103X	MG RESISTOR 10kΩ,1/16W
R138			NRSA63J-333X	MG RESISTOR 33kΩ,1/16W	R1627			NRSA63J-223X	MG RESISTOR 22kΩ,1/16W
R139			NRSA63J-104X	MG RESISTOR 100kΩ,1/16W	R1628			NRSA63J-103X	MG RESISTOR 10kΩ,1/16W
R140			NRSA63J-753X	MG RESISTOR 75kΩ,1/16W	R2001			NRSA63J-104X	MG RESISTOR 100kΩ,1/16W
R141			NRSA63J-334X	MG RESISTOR 330kΩ,1/16W	R2002			NRSA63J-332X	MG RESISTOR 3.3kΩ,1/16W
R142			NRSA63J-103X	MG RESISTOR 10kΩ,1/16W	R2003			NRSA63J-102X	MG RESISTOR 1kΩ,1/16W
R143			NRSA63J-105X	MG RESISTOR 1MΩ,1/16W	R2004			NRSA63J-681X	MG RESISTOR 680Ω,1/16W
R144			NRSA63J-221X	MG RESISTOR 220Ω,1/16W	R2005			NRSA63J-272X	MG RESISTOR 2.7kΩ,1/16W
R145			NRSA63J-222X	MG RESISTOR 2.2kΩ,1/16W	R2006			NRSA63J-102X	MG RESISTOR 1kΩ,1/16W
R146			NRSA63J-222X	MG RESISTOR 2.2kΩ,1/16W	R2011			NRSA63J-101X	MG RESISTOR 100Ω,1/16W
R147			NRSA63J-472X	MG RESISTOR 4.7kΩ,1/16W	R2012			NRSA63J-101X	MG RESISTOR 100Ω,1/16W
R148			NRSA63J-222X	MG RESISTOR 2.2kΩ,1/16W	R2021			NRSA63J-103X	MG RESISTOR 10kΩ,1/16W
R149			NRSA63J-222X	MG RESISTOR 2.2kΩ,1/16W	R2022			NRSA63J-334X	MG RESISTOR 330kΩ,1/16W
R150			NRSA63J-222X	MG RESISTOR 2.2kΩ,1/16W	R2023			NRSA63J-820X	MG RESISTOR 82Ω,1/16W
R151			NRSA63J-222X	MG RESISTOR 2.2kΩ,1/16W	R2024			NRSA63J-183X	MG RESISTOR 18kΩ,1/16W
R152			NRSA63J-474X	MG RESISTOR 470kΩ,1/16W	R2025			NRSA63J-823X	MG RESISTOR 82kΩ,1/16W
R153			NRSA63J-474X	MG RESISTOR 470kΩ,1/16W	R2027			NRSA63J-102X	MG RESISTOR 1kΩ,1/16W
R154			NRSA63J-222X	MG RESISTOR 2.2kΩ,1/16W	R2028			NRSA63J-102X	MG RESISTOR 1kΩ,1/16W
R155			NRSA63J-104X	MG RESISTOR 100kΩ,1/16W	R2030			NRSA63J-104X	MG RESISTOR 100kΩ,1/16W
△ R156			NRSA63J-102X	MG RESISTOR 1kΩ,1/16W	R2031			NRSA63J-332X	MG RESISTOR 3.3kΩ,1/16W
R157			NRSA63J-0R0X	MG RESISTOR 0Ω,1/16W	R2051			NRSA63J-102X	MG RESISTOR 1kΩ,1/16W
R162			NRSA63J-472X	MG RESISTOR 4.7kΩ,1/16W	R2071			NRSA63J-473X	MG RESISTOR 47kΩ,1/16W
R163			NRSA63J-103X	MG RESISTOR 10kΩ,1/16W	R2072			NRSA63J-562X	MG RESISTOR 5.6kΩ,1/16W
R164			NRSA63J-221X	MG RESISTOR 220Ω,1/16W	R3501			NRSA63J-221X	MG RESISTOR 220Ω,1/16W
R165			NRSA63J-151X	MG RESISTOR 150Ω,1/16W	R3502			NRSA63J-102X	MG RESISTOR 1kΩ,1/16W
R166			NRSA63J-105X	MG RESISTOR 1MΩ,1/16W	R3506			NRSA63J-102X	MG RESISTOR 1kΩ,1/16W
R167			NRSA63J-183X	MG RESISTOR 18kΩ,1/16W	R3507			NRSA63J-101X	MG RESISTOR 100Ω,1/16W
R168			NRSA63J-562X	MG RESISTOR 5.6kΩ,1/16W	R3508			NRSA63J-153X	MG RESISTOR 15kΩ,1/16W
R169			NRSA63J-331X	MG RESISTOR 330Ω,1/16W	R3901			NRSA63J-100X	MG RESISTOR 10Ω,1/16W
R170			NRSA63J-333X	MG RESISTOR 33kΩ,1/16W	R3902			NRSA63J-101X	MG RESISTOR 100Ω,1/16W
R171			NRSA63J-222X	MG RESISTOR 2.2kΩ,1/16W	R3903			NRSA63J-182X	MG RESISTOR 1.8kΩ,1/16W
R172			NRSA63J-222X	MG RESISTOR 2.2kΩ,1/16W	R4001			NRSA63J-102X	MG RESISTOR 1kΩ,1/16W
R177			NRSA63J-183X	MG RESISTOR 18kΩ,1/16W	R4002			NRSA63J-105X	MG RESISTOR 1MΩ,1/16W
R178			NRSA63J-562X	MG RESISTOR 5.6kΩ,1/16W	R4003			NRSA63J-563X	MG RESISTOR 56kΩ,1/16W
R181			NRSA63J-0R0X	MG RESISTOR 0Ω,1/16W	R4004			NRSA63D-153X	MG RESISTOR 15kΩ,1/16W
R183			NRSA63J-105X	MG RESISTOR 1MΩ,1/16W	R4009			NRSA63D-153X	MG RESISTOR 15kΩ,1/16W
R185			NRSA63J-0R0X	MG RESISTOR 0Ω,1/16W	R4014			NRSA63J-103X	MG RESISTOR,E,F,G,H 10kΩ,1/16W
R188			NRSA63J-472X	MG RESISTOR 4.7kΩ,1/16W	R4015			NRSA63J-0R0X	MG RESISTOR 0Ω,1/16W
R189			NRSA63J-331X	MG RESISTOR 330Ω,1/16W	R4019			NRSA63D-822X	MG RESISTOR 8.2kΩ,1/16W
R190			NRSA63J-105X	MG RESISTOR 1MΩ,1/16W	R4020			NRSA63D-471X	MG RESISTOR 470Ω,1/16W
R1601			NRV142F-R33X	CMF RESISTOR 0.33Ω,1/4W	R4021			NRSA63D-181X	MG RESISTOR 180Ω,1/16W
R1602			NRV142F-R33X	CMF RESISTOR 0.33Ω,1/4W	R4022			NRSA63D-182X	MG RESISTOR 1.8kΩ,1/16W
R1603			NRSA63J-153X	MG RESISTOR 15kΩ,1/16W	R4025			NRSA63D-222X	MG RESISTOR 2.2kΩ,1/16W
R1604			NRSA63J-153X	MG RESISTOR 15kΩ,1/16W	R4026			NRSA63J-563X	MG RESISTOR 56kΩ,1/16W
R1605			NRSA63J-102X	MG RESISTOR 1kΩ,1/16W	R4027			NRSA63J-104X	MG RESISTOR 100kΩ,1/16W
R1606			NRSA63J-104X	MG RESISTOR 100kΩ,1/16W	R4028			NRSA63J-104X	MG RESISTOR 100kΩ,1/16W
R1607			NRSA63J-471X	MG RESISTOR 470Ω,1/16W	R4032			NRSA63J-0R0X	MG RESISTOR 0Ω,1/16W

#	△	REF No.	PART No.	PART NAME, DESCRIPTION	#	△	REF No.	PART No.	PART NAME, DESCRIPTION
		R4033	NRSA63J-392X	MG RESISTOR 3.9kΩ, 1/16W			R6004	NRVA63D-681X	CMF RESISTOR 680Ω, 1/16W
		R4034	NRSA63J-332X	MG RESISTOR 3.3kΩ, 1/16W			R6005	NRVA63D-203X	CMF RESISTOR 20kΩ, 1/16W
		R4035	NRSA63J-332X	MG RESISTOR 3.3kΩ, 1/16W			R6008	NRVA63D-103X	CMF RESISTOR 10kΩ, 1/16W
		R4201	NRSA63J-103X	MG RESISTOR 10kΩ, 1/16W			R6012	NRSA63J-103X	MG RESISTOR 10kΩ, 1/16W
		R4202	NRSA63J-0R0X	MG RESISTOR 0Ω, 1/16W			R6015	NRSA63J-104X	MG RESISTOR 100kΩ, 1/16W
		R4203	NRSA63J-223X	MG RESISTOR 22kΩ, 1/16W			R6021	NRSA63J-222X	MG RESISTOR 2.2kΩ, 1/16W
		R4204	NRSA63J-331X	MG RESISTOR 330Ω, 1/16W			R6024	NRSA63J-224X	MG RESISTOR 220kΩ, 1/16W
		R4205	NRSA63J-105X	MG RESISTOR 1MΩ, 1/16W			R6025	NRSA63J-104X	MG RESISTOR 100kΩ, 1/16W
		R4206	NRSA63J-103X	MG RESISTOR 10kΩ, 1/16W			R6026	NRSA63J-104X	MG RESISTOR 100kΩ, 1/16W
		R4207	NRSA63J-104X	MG RESISTOR 100kΩ, 1/16W			R6027	NRSA63J-104X	MG RESISTOR 100kΩ, 1/16W
		R4208	NRSA63J-472X	MG RESISTOR 4.7kΩ, 1/16W			R6028	NRSA63J-104X	MG RESISTOR 100kΩ, 1/16W
		R4209	NRSA63J-104X	MG RESISTOR 100kΩ, 1/16W			R6029	NRSA63J-104X	MG RESISTOR 100kΩ, 1/16W
		R4210	NRSA63J-105X	MG RESISTOR 1MΩ, 1/16W			R6103	NRVA63D-223X	CMF RESISTOR 22kΩ, 1/16W
		R4211	NRSA63J-243X	MG RESISTOR 24kΩ, 1/16W			R6104	NRVA63D-103X	CMF RESISTOR 10kΩ, 1/16W
		R4214	NRSA63J-472X	MG RESISTOR 4.7kΩ, 1/16W			R6203	NRVA63D-103X	CMF RESISTOR 10kΩ, 1/16W
		R4215	NRSA63J-683X	MG RESISTOR 68kΩ, 1/16W			R6204	NRVA63D-123X	CMF RESISTOR 12kΩ, 1/16W
		R4216	NRSA63J-103X	MG RESISTOR 10kΩ, 1/16W			R6303	NRVA63D-183X	CMF RESISTOR 18kΩ, 1/16W
		R4217	NRSA63J-102X	MG RESISTOR 1kΩ, 1/16W			R6304	NRVA63D-472X	CMF RESISTOR 4.7kΩ, 1/16W
		R4218	NRSA63J-102X	MG RESISTOR 1kΩ, 1/16W			R6401	NRSA63J-0R0X	MG RESISTOR 0Ω, 1/16W
		R4219	NRSA63J-104X	MG RESISTOR 100kΩ, 1/16W			R6501	NRSA63J-0R0X	MG RESISTOR 0Ω, 1/16W
		R4220	NRSA63J-152X	MG RESISTOR 1.5kΩ, 1/16W			R6502	NRSA63J-471X	MG RESISTOR 470Ω, 1/16W
		R4221	NRSA63J-334X	MG RESISTOR 330kΩ, 1/16W			R6603	NRVA63D-683X	CMF RESISTOR 68kΩ, 1/16W
		R4222	NRSA63J-154X	MG RESISTOR 150kΩ, 1/16W			R6604	NRVA63D-392X	CMF RESISTOR 3.9kΩ, 1/16W
		R4223	NRSA63J-333X	MG RESISTOR 33kΩ, 1/16W			R6605	NRSA63J-274X	MG RESISTOR 270kΩ, 1/16W
		R4224	NRSA63J-223X	MG RESISTOR 22kΩ, 1/16W			R6606	NRSA63J-272X	MG RESISTOR 2.7kΩ, 1/16W
		R4251	NRSA63J-182X	MG RESISTOR 1.8kΩ, 1/16W			R6612	NRSA63J-823X	MG RESISTOR 82kΩ, 1/16W
		R4252	NRSA63J-103X	MG RESISTOR 10kΩ, 1/16W			R6613	NRSA63J-104X	MG RESISTOR 100kΩ, 1/16W
		R4253	NRSA63J-103X	MG RESISTOR 10kΩ, 1/16W			R6614	NRSA63J-153X	MG RESISTOR 15kΩ, 1/16W
		R4254	NRSA63J-684X	MG RESISTOR 680kΩ, 1/16W			R6616	NRSA63J-102X	MG RESISTOR 1kΩ, 1/16W
		R4255	NRSA63J-222X	MG RESISTOR 2.2kΩ, 1/16W			R6702	NRSA63J-330X	MG RESISTOR 33Ω, 1/16W
		R4256	NRSA63J-824X	MG RESISTOR 820kΩ, 1/16W			R6704	NRVA63D-123X	CMF RESISTOR 12kΩ, 1/16W
		R4257	NRSA63J-822X	MG RESISTOR 8.2kΩ, 1/16W			R6706	NRZ0058-R20X	MG RESISTOR 0.2Ω, 1/2W
		R4258	NRSA63J-104X	MG RESISTOR 100kΩ, 1/16W			R6707	NRS016J-121X	MG RESISTOR 120Ω, 1W
		R4259	NRSA63J-683X	MG RESISTOR 68kΩ, 1/16W			R6708	NRS016J-121X	MG RESISTOR 120Ω, 1W
		R4262	NRSA63J-302X	MG RESISTOR 3kΩ, 1/16W			R6709	NRS016J-121X	MG RESISTOR 120Ω, 1W
△		R4501	NRSA63J-6R8X	MG RESISTOR 6.8Ω, 1/16W			R6710	NRVA63D-823X	CMF RESISTOR 82kΩ, 1/16W
△		R4502	NRSA63J-6R8X	MG RESISTOR 6.8Ω, 1/16W			R6711	NRVA63D-333X	CMF RESISTOR 33kΩ, 1/16W
△		R4503	NRSA63J-6R8X	MG RESISTOR 6.8Ω, 1/16W			R6713	NRSA63J-562X	MG RESISTOR 5.6kΩ, 1/16W
△		R4504	NRSA63J-6R8X	MG RESISTOR 6.8Ω, 1/16W			R6715	NRSA63J-222X	MG RESISTOR 2.2kΩ, 1/16W
		R4505	NRSA63J-271X	MG RESISTOR 270Ω, 1/16W			R6801	NRSA63J-0R0X	MG RESISTOR 0Ω, 1/16W
		R4507	NRSA63J-103X	MG RESISTOR 10kΩ, 1/16W			R6802	NRSA63J-104X	MG RESISTOR 100kΩ, 1/16W
		R4508	NRSA63J-103X	MG RESISTOR 10kΩ, 1/16W			R6811	NRSA63J-101X	MG RESISTOR 100Ω, 1/16W
		R4512	NRSA63J-0R0X	MG RESISTOR 0Ω, 1/16W			R6812	NRSA63J-222X	MG RESISTOR 2.2kΩ, 1/16W
		R4514	NRSA63J-223X	MG RESISTOR 22kΩ, 1/16W			R6961	NRSA63J-223X	MG RESISTOR 22kΩ, 1/16W
		R4515	NRSA63J-182X	MG RESISTOR 1.8kΩ, 1/16W			R7301	NRVA63D-182X	CMF RESISTOR 1.8kΩ, 1/16W
		R4701	NRSA63D-112X	MG RESISTOR 1.1kΩ, 1/16W			R7305	NRVA63D-821X	CMF RESISTOR 820Ω, 1/16W
		R4703	NRSA63J-681X	MG RESISTOR 680Ω, 1/16W			R7331	NRSA63J-103X	MG RESISTOR 10kΩ, 1/16W
		R4704	NRSA63J-122X	MG RESISTOR 1.2kΩ, 1/16W			R7332	NRSA63J-152X	MG RESISTOR 1.5kΩ, 1/16W
		R4706	NRSA63D-680X	MG RESISTOR 68Ω, 1/16W			R7333	NRSA63J-473X	MG RESISTOR 47kΩ, 1/16W
		R4707	NRSA63D-751X	MG RESISTOR 750Ω, 1/16W			RA101	NRZ0038-222X	NETWORK RESISTOR 2.2kΩ
		R4709	NRSA63J-681X	MG RESISTOR 680Ω, 1/16W			RA102	NRZ0038-222X	NETWORK RESISTOR 2.2kΩ
		R4710	NRSA63J-122X	MG RESISTOR 1.2kΩ, 1/16W			RA103	NRZ0038-222X	NETWORK RESISTOR 2.2kΩ
		R4712	NRSA63D-680X	MG RESISTOR,E,F,G,H 68Ω, 1/16W			RA104	NRZ0038-222X	NETWORK RESISTOR 2.2kΩ
		R4713	NRSA63D-680X	MG RESISTOR,E,F,G,H 68Ω, 1/16W			RA106	NRZ0038-331X	NETWORK RESISTOR 330Ω
		R5201	NRSA63J-243X	MG RESISTOR 24kΩ, 1/16W			RA107	NRZ0038-222X	NETWORK RESISTOR 2.2kΩ
		R5202	NRSA63J-220X	MG RESISTOR 22Ω, 1/16W			RA108	NRZ0038-222X	NETWORK RESISTOR 2.2kΩ
		R5213	NRSA63J-101X	MG RESISTOR 100Ω, 1/16W			RA109	NRZ0038-474X	NETWORK RESISTOR 470kΩ
		R5214	NRSA63J-101X	MG RESISTOR 100Ω, 1/16W			RA110	NRZ0038-474X	NETWORK RESISTOR 470kΩ
		R5215	NRSA63J-104X	MG RESISTOR 100kΩ, 1/16W			RA111	NRZ0038-474X	NETWORK RESISTOR 470kΩ
		R5216	NRSA63J-100X	MG RESISTOR 10Ω, 1/16W			RA112	NRZ0038-104X	NETWORK RESISTOR 100kΩ
		R5217	NRSA63J-104X	MG RESISTOR 100kΩ, 1/16W			RA6020	NRZ0038-102X	NETWORK RESISTOR 1kΩ
		R6001	NRSA63J-104X	MG RESISTOR 100kΩ, 1/16W			C103	NBE20JM-106X	T CAPACITOR 10μF, 6.3V
		R6002	NRSA63J-333X	MG RESISTOR 33kΩ, 1/16W			C104	NCB31EK-103X	CAPACITOR 0.01μF, 25V
		R6003	NRVA63D-912X	CMF RESISTOR 9.1kΩ, 1/16W			C105	NCB21CK-224X	CAPACITOR 0.22μF, 16V

# △ REF No.	PART No.	PART NAME, DESCRIPTION		# △ REF No.	PART No.	PART NAME, DESCRIPTION	
C107	NCB31EK-103X	CAPACITOR	0.01μF,25V	C2024	NCB31HK-102X	CAPACITOR	0.001μF,50V
C108	NBE21AM-225X	T CAPACITOR	2.2μF,10V	C2025	NCB21CK-105X	CAPACITOR	1μF,16V
C109	NBE20JM-106X	T CAPACITOR	10μF,6.3V	C2026	NCB31HK-222X	CAPACITOR	0.0022μF,50V
C110	NDC31HJ-101X	CAPACITOR	100pF,50V	C2027	NCB21CK-474X	CAPACITOR	0.47μF,16V
C112	NEA70JM-226X	E CAPACITOR	22μF,6.3V	C2028	NCB21CK-105X	CAPACITOR	1μF,16V
C113	NCB31EK-103X	CAPACITOR	0.01μF,25V	C2029	NCB21CK-105X	CAPACITOR	1μF,16V
C114	NCB31EK-103X	CAPACITOR	0.01μF,25V	C2031	NCB31CK-104X	CAPACITOR	0.1μF,16V
C115	NCF31EZ-104X	CAPACITOR	0.1μF,25V	C2032	NCB31HK-472X	CAPACITOR	0.0047μF,50V
C116	NCB31EK-103X	CAPACITOR	0.01μF,25V	C2033	NBE20JM-475X	T CAPACITOR	4.7μF,6.3V
C118	NCF31EZ-104X	CAPACITOR	0.1μF,25V	C2034	NCB31CK-104X	CAPACITOR	0.1μF,16V
C119	NCB31EK-103X	CAPACITOR	0.01μF,25V	C2035	NBE20JM-226X	T CAPACITOR	22μF,6.3V
C120	NCB31EK-103X	CAPACITOR	0.01μF,25V	C2036	NBE20JM-106X	T CAPACITOR	10μF,6.3V
C121	NCF31EZ-104X	CAPACITOR	0.1μF,25V	C2038	NCB21CK-474X	CAPACITOR	0.47μF,16V
C122	NCF31EZ-104X	CAPACITOR	0.1μF,25V	C2039	NDC31HJ-330X	CAPACITOR	33pF,50V
C123	NDC31HJ-100X	CAPACITOR	10pF,50V	C2051	NCB31EK-103X	CAPACITOR	0.01μF,25V
C124	NDC31HJ-100X	CAPACITOR	10pF,50V	C2071	NBE20JM-106X	T CAPACITOR	10μF,6.3V
C125	NCB31EK-103X	CAPACITOR	0.01μF,25V	C2072	NCB31HK-222X	CAPACITOR	0.0022μF,50V
C126	NDC31HJ-100X	CAPACITOR	10pF,50V	C3506	NCB31EK-103X	CAPACITOR	0.01μF,25V
C127	NCB31CK-333X	CAPACITOR	0.033μF,16V	C3507	NCB31EK-103X	CAPACITOR	0.01μF,25V
C128	NCB21CK-474X	CAPACITOR	0.47μF,16V	C3508	NCB31EK-103X	CAPACITOR	0.01μF,25V
C129	NCB31CK-333X	CAPACITOR	0.033μF,16V	C3509	NDC31HJ-221X	CAPACITOR	220pF,50V
C131	NCF31EZ-104X	CAPACITOR	0.1μF,25V	C3510	NCB31CK-104X	CAPACITOR	0.1μF,16V
C132	NCF31EZ-104X	CAPACITOR	0.1μF,25V	C3512	NCB10JK-106X	CAPACITOR	10μF,6.3V
C133	NCF31EZ-104X	CAPACITOR	0.1μF,25V	C3513	NCB31CK-223X	CAPACITOR	0.022μF,16V
C134	NCF31EZ-104X	CAPACITOR	0.1μF,25V	C3514	NCB30JK-105X	CAPACITOR	1μF,6.3V
C138	NCB31EK-103X	CAPACITOR	0.01μF,25V	C3515	NCB31EK-103X	CAPACITOR	0.01μF,25V
C142	NCB31CK-104X	CAPACITOR	0.1μF,16V	C3516	NDC31HJ-100X	CAPACITOR	10pF,50V
C143	NDC31HJ-3R0X	CAPACITOR	3pF,50V	C3902	NCB31EK-103X	CAPACITOR	0.01μF,25V
C1201	NCB31HK-102X	CAPACITOR	0.001μF,50V	C3903	NDC31HJ-3R0X	CAPACITOR	3pF,50V
C1202	NBE20JM-106X	T CAPACITOR	10μF,6.3V	C4002	NCF31EZ-104X	CAPACITOR	0.1μF,25V
C1205	NCB31EK-153X	CAPACITOR	0.015μF,25V	C4003	NCF31EZ-104X	CAPACITOR	0.1μF,25V
C1206	NBE20JM-106X	T CAPACITOR	10μF,6.3V	C4004	NCF31EZ-104X	CAPACITOR	0.1μF,25V
C1601	NCB21EK-104X	CAPACITOR	0.1μF,25V	C4005	NCF31EZ-104X	CAPACITOR	0.1μF,25V
C1602	NCB30JK-105X	CAPACITOR	1μF,6.3V	C4007	NCF31EZ-104X	CAPACITOR	0.1μF,25V
C1603	NCB31EK-103X	CAPACITOR	0.01μF,25V	C4008	NCF31EZ-104X	CAPACITOR	0.1μF,25V
C1604	NCB31EK-103X	CAPACITOR	0.01μF,25V	C4009	NDC31HG-100X	CAPACITOR	10pF,50V
C1605	NCB31EK-103X	CAPACITOR	0.01μF,25V	C4010	NDC31HG-100X	CAPACITOR	10pF,50V
C1606	NCB21EK-104X	CAPACITOR	0.1μF,25V	C4012	NCF31EZ-104X	CAPACITOR	0.1μF,25V
C1607	NCB21CK-474X	CAPACITOR	0.47μF,16V	C4013	NCF31EZ-104X	CAPACITOR	0.1μF,25V
C1608	NCB31HK-332X	CAPACITOR	0.0033μF,50V	C4014	NCB31CK-104X	CAPACITOR	0.1μF,16V
C1609	NBE20JM-106X	T CAPACITOR	10μF,6.3V	C4015	NCF31EZ-104X	CAPACITOR	0.1μF,25V
C1610	NCB31HK-681X	CAPACITOR	680pF,50V	C4016	NCB31CK-104X	CAPACITOR	0.1μF,16V
C1611	NCB31CK-104X	CAPACITOR	0.1μF,16V	C4017	NCF31EZ-104X	CAPACITOR	0.1μF,25V
C1612	NCB21CK-105X	CAPACITOR	1μF,16V	C4018	NCF31EZ-104X	CAPACITOR	0.1μF,25V
C1613	NCB31CK-333X	CAPACITOR	0.033μF,16V	C4021	NCF31EZ-104X	CAPACITOR	0.1μF,25V
C1614	NCB31CK-104X	CAPACITOR	0.1μF,16V	C4023	NCF31EZ-104X	CAPACITOR	0.1μF,25V
C1615	NCB31CK-104X	CAPACITOR	0.1μF,16V	C4025	NCB31CK-104X	CAPACITOR,E,F,G,H	0.1μF,16V
C1616	NCB31CK-104X	CAPACITOR	0.1μF,16V	C4026	NCB10JK-106X	CAPACITOR	10μF,6.3V
C1617	NCB31CK-104X	CAPACITOR	0.1μF,16V	C4027	NCF31EZ-104X	CAPACITOR	0.1μF,25V
C1618	NCB31CK-104X	CAPACITOR	0.1μF,16V	C4028	NCF31EZ-104X	CAPACITOR	0.1μF,25V
C1619	NCB31CK-104X	CAPACITOR	0.1μF,16V	C4029	NCB31CK-104X	CAPACITOR	0.1μF,16V
C1620	NBE21AM-106X	T CAPACITOR	10μF,10V	C4030	NCF31EZ-104X	CAPACITOR	0.1μF,25V
C1621	NBP41CM-106X	T CAPACITOR	10μF,16V	C4031	NCB30JK-105X	CAPACITOR	1μF,6.3V
C1625	NCB31CK-104X	CAPACITOR	0.1μF,16V	C4032	NCF31EZ-104X	CAPACITOR	0.1μF,25V
C1628	NDC31HJ-101X	CAPACITOR	100pF,50V	C4033	NCF31EZ-104X	CAPACITOR	0.1μF,25V
C1630	NBE20JM-106X	T CAPACITOR	10μF,6.3V	C4034	NCF31EZ-104X	CAPACITOR	0.1μF,25V
C2001	NBE20JM-106X	T CAPACITOR	10μF,6.3V	C4035	NCF31EZ-104X	CAPACITOR	0.1μF,25V
C2002	NFV41HJ-183X	MPPS CAPACITOR	0.018μF,50V	C4036	NCF31EZ-104X	CAPACITOR	0.1μF,25V
C2003	NDC31HJ-331X	CAPACITOR	330pF,50V	C4037	NCF31EZ-104X	CAPACITOR	0.1μF,25V
C2004	NBE20JM-226X	T CAPACITOR	22μF,6.3V	C4038	NCF31EZ-104X	CAPACITOR	0.1μF,25V
C2005	NCB21CK-105X	CAPACITOR	1μF,16V	C4039	NCF31EZ-104X	CAPACITOR	0.1μF,25V
C2021	NCB31EK-103X	CAPACITOR	0.01μF,25V	C4045	NCB30JK-105X	CAPACITOR	1μF,6.3V
C2022	NBE20JM-156X	T CAPACITOR	15μF,6.3V	C4046	NDC31HJ-221X	CAPACITOR	220pF,50V
C2023	NBP21CM-105X	T CAPACITOR	1μF,16V	C4047	NCF31EZ-104X	CAPACITOR	0.1μF,25V

# ▲ REF No.	PART No.	PART NAME, DESCRIPTION		# ▲ REF No.	PART No.	PART NAME, DESCRIPTION	
C4048	NCF31EZ-104X	CAPACITOR	0.1μF,25V	C6005	NCB21CK-105X	CAPACITOR	1μF,16V
C4201	NEA71HM-225X	E CAPACITOR	2.2μF,50V	C6006	NCB31EK-103X	CAPACITOR	0.01μF,25V
C4202	NCF31EZ-104X	CAPACITOR	0.1μF,25V	C6007	NCB21CK-105X	CAPACITOR	1μF,16V
C4203	NCB31CK-104X	CAPACITOR	0.1μF,16V	C6009	NDC31HJ-101X	CAPACITOR	100pF,50V
C4205	NCB31EK-103X	CAPACITOR	0.01μF,25V	C6010	NCB21CK-224X	CAPACITOR	0.22μF,16V
C4206	NCB31CK-104X	CAPACITOR	0.1μF,16V	C6011	NCB31EK-103X	CAPACITOR	0.01μF,25V
C4207	NCB31EK-103X	CAPACITOR	0.01μF,25V	C6012	NCB21CK-224X	CAPACITOR	0.22μF,16V
C4208	NCB31CK-104X	CAPACITOR	0.1μF,16V	C6013	NCB21CK-154X	CAPACITOR	0.15μF,16V
C4209	NCB31CK-104X	CAPACITOR	0.1μF,16V	C6014	NCB31CK-104X	CAPACITOR	0.1μF,16V
C4210	NCF21CZ-105X	CAPACITOR	1μF,16V	C6015	NCB31CK-104X	CAPACITOR	0.1μF,16V
C4251	NEA71HM-335X	E CAPACITOR	3.3μF,50V	C6016	NCB31EK-473X	CAPACITOR	0.047μF,25V
C4252	NCB31CK-104X	CAPACITOR	0.1μF,16V	C6017	NCF21CZ-105X	CAPACITOR	1μF,16V
C4253	NCB31EK-153X	CAPACITOR	0.015μF,25V	C6018	NCB21CK-224X	CAPACITOR	0.22μF,16V
C4254	NCB31EK-153X	CAPACITOR	0.015μF,25V	C6020	NCB21CK-224X	CAPACITOR	0.22μF,16V
C4256	NEA71CM-106X	E CAPACITOR	10μF,16V	C6021	NCB31EK-103X	CAPACITOR	0.01μF,25V
C4504	NCF31EZ-104X	CAPACITOR	0.1μF,25V	C6101	NCB21CK-105X	CAPACITOR	1μF,16V
C4505	NDC31HJ-330X	CAPACITOR	33pF,50V	C6102	NCB10JK-106X	CAPACITOR	10μF,6.3V
C4506	NCB31HK-102X	CAPACITOR	0.001μF,50V	C6105	NCB31HK-681X	CAPACITOR	680pF,50V
C4507	NCB31HK-102X	CAPACITOR	0.001μF,50V	C6110	NCB31HK-152X	CAPACITOR	0.0015μF,50V
C4508	NCB31HK-102X	CAPACITOR	0.001μF,50V	C6201	NCB21CK-105X	CAPACITOR	1μF,16V
C4509	NCB31HK-102X	CAPACITOR	0.001μF,50V	C6202	NCB10JK-106X	CAPACITOR	10μF,6.3V
C4510	NCB31CK-104X	CAPACITOR	0.1μF,16V	C6203	NBE40JM-476X	T CAPACITOR	47μF,6.3V
C4511	NCF31EZ-104X	CAPACITOR	0.1μF,25V	C6205	NCB31HK-472X	CAPACITOR	0.0047μF,50V
C4512	NEA71CM-107X	E CAPACITOR	100μF,16V	C6210	NCB31HK-472X	CAPACITOR	0.0047μF,50V
C4702	NDC31HJ-270X	CAPACITOR	27pF,50V	C6301	NCB11CK-225X	CAPACITOR	2.2μF,16V
C4703	NDC31HJ-150X	CAPACITOR	15pF,50V	C6302	NCB10JK-106X	CAPACITOR	10μF,6.3V
C4704	NCB30JK-105X	CAPACITOR	1μF,6.3V	C6303	NBE40JM-476X	T CAPACITOR	47μF,6.3V
C4705	NCB31EK-103X	CAPACITOR	0.01μF,25V	C6305	NCB31HK-561X	CAPACITOR	560pF,50V
C4706	NEA70GM-107X	E CAPACITOR	100μF,4.0V	C6310	NCB31HK-102X	CAPACITOR	0.001μF,50V
C4707	NEA70JM-226X	E CAPACITOR	22μF,6.3V	C6401	NCB21CK-105X	CAPACITOR	1μF,16V
C4708	NCF31EZ-104X	CAPACITOR	0.1μF,25V	C6402	NCF21CZ-105X	CAPACITOR	1μF,16V
C4709	NBE20JM-106X	T CAPACITOR	10μF,6.3V	C6501	NCB21CK-105X	CAPACITOR	1μF,16V
C4713	NEA70JM-226X	E CAPACITOR,E,F,G,H	22μF,6.3V	C6502	NCF21CZ-105X	CAPACITOR	1μF,16V
C4714	NEA70GM-107X	E CAPACITOR,E,F,G,H	100μF,4.0V	C6602	NCF21CZ-105X	CAPACITOR	1μF,16V
C4715	NCB31EK-103X	CAPACITOR,E,F,G,H	0.01μF,25V	C6603	NCB11EK-105X	CAPACITOR	1μF,25V
C4716	NDC31HJ-270X	CAPACITOR	27pF,50V	C6606	NCB11EK-105X	CAPACITOR	1μF,25V
C4717	NDC31HJ-150X	CAPACITOR	15pF,50V	C6607	NCF21CZ-105X	CAPACITOR	1μF,16V
C5203	NCB10JK-106X	CAPACITOR	10μF,6.3V	C6610	NCB31EK-103X	CAPACITOR	0.01μF,25V
C5207	NCB31EK-103X	CAPACITOR	0.01μF,25V	C6616	NCB21CK-105X	CAPACITOR	1μF,16V
C5208	NCB31EK-103X	CAPACITOR	0.01μF,25V	C6701	NCB21CK-105X	CAPACITOR	1μF,16V
C5209	NCB31EK-103X	CAPACITOR	0.01μF,25V	C6702	NCB41CK-106X	CAPACITOR	10μF,16V
C5210	NCF31EZ-104X	CAPACITOR	0.1μF,25V	C6711	NCB31HK-472X	CAPACITOR	0.0047μF,50V
C5211	NCB21CK-105X	CAPACITOR	1μF,16V	C6801	NCF21CZ-105X	CAPACITOR	1μF,16V
C5212	NCB21CK-105X	CAPACITOR	1μF,16V	C6802	NCF21CZ-105X	CAPACITOR	1μF,16V
C5213	NCB31HK-332X	CAPACITOR	0.0033μF,50V	C6811	NCB21CK-105X	CAPACITOR	1μF,16V
C5214	NCB31EK-103X	CAPACITOR	0.01μF,25V	C7325	NBE20JM-106X	T CAPACITOR	10μF,6.3V
C5218	NCF31EZ-104X	CAPACITOR	0.1μF,25V	C7326	NBE20JM-106X	T CAPACITOR	10μF,6.3V
C5219	NBP21CM-685X	T CAPACITOR	6.8μF,16V	C7329	NDC31HJ-100X	CAPACITOR	10pF,50V
C5221	NCB11EK-105X	CAPACITOR	1μF,25V	C8007	NCF31EZ-104X	CAPACITOR,A,B,C,D	0.1μF,25V
C5222	NCB31CK-104X	CAPACITOR	0.1μF,16V	L101	NQL365K-220X	COIL	22μH
C5223	NCF31EZ-104X	CAPACITOR	0.1μF,25V	L501	NRSA63J-0R0X	MG RESISTOR,G	0Ω, 1/16W
C5225	NCF31EZ-104X	CAPACITOR	0.1μF,25V	L1601	NQL144M-1R0X	COIL	1.0μH
C5227	NCB31CK-104X	CAPACITOR	0.1μF,16V	L1602	NQL144K-100X	COIL	10μH
C5228	NCF31EZ-104X	CAPACITOR	0.1μF,25V	L2001	NQL144K-470X	COIL	47μH
C5229	NCB11EK-105X	CAPACITOR	1μF,25V	L2003	NQL034K-470X	COIL	47μH
C5230	NCB21EK-104X	CAPACITOR	0.1μF,25V	L2004	NQR0403-003X	FERRITE BEAD	
C5232	NDC31HJ-100X	CAPACITOR	10pF,50V	L2005	NRSA63J-0R0X	MG RESISTOR	0Ω, 1/16W
C5233	NDC31HJ-100X	CAPACITOR	10pF,50V	L2021	NQL315K-470X	COIL	47μH
C5234	NDC31HJ-100X	CAPACITOR	10pF,50V	L2022	NQR0403-003X	FERRITE BEAD	
C5235	NDC31HJ-100X	CAPACITOR	10pF,50V	L2023	NQR0406-003X	FERRITE BEAD	
C5236	NDC31HJ-100X	CAPACITOR	10pF,50V	L2051	NRSA63J-0R0X	MG RESISTOR	0Ω, 1/16W
C5237	NDC31HJ-100X	CAPACITOR	10pF,50V	L2052	NRSA63J-0R0X	MG RESISTOR	0Ω, 1/16W
C6002	NEA71CM-106X	E CAPACITOR	10μF,16V	L2071	NRSA63J-0R0X	MG RESISTOR	0Ω, 1/16W
C6004	NCF21CZ-105X	CAPACITOR	1μF,16V	L2072	NRSA63J-0R0X	MG RESISTOR	0Ω, 1/16W

#	△ REF No.	PART No.	PART NAME, DESCRIPTION	
L3502		NQL365K-220X	COIL	22μH
L3503		NQL085J-5R6X	COIL	5.6μH
L4001		NQL365K-220X	COIL	22μH
L4201		NQR0006-001X	FERRITE BEAD	
L4501		NQR0006-001X	FERRITE BEAD	
L4502		NQL034K-220X	COIL	22μH
L4701		NQL365K-220X	COIL	22μH
L5201		NQL315K-470X	COIL	47μH
L5202		NQL365K-220X	COIL	22μH
L5203		NQL365K-220X	COIL	22μH
L6001		NQL62EM-100X	COIL	10μH
L6002		NQL62EM-100X	COIL	10μH
L6101		NQL64EM-330X	COIL	33μH
L6201		NQL64EM-470X	COIL	47μH
L6301		NQL52EM-220X	COIL	22μH
L6302		NQR0006-001X	FERRITE BEAD	
L6401		NQLZ011-470X	COIL	47μH
L6501		NQLZ011-470X	COIL	47μH
L6601		NQL52EM-221X	COIL	220μH
L6701		NQL52EM-100X	COIL	10μH
L7304		NQL144K-100X	COIL	10μH
X101		NAX0251-001X	CRYSTAL RESONATOR	
X102		NAX0325-001X	CRYSTAL RESONATOR	
X4001		QAX0708-001	CRYSTAL RESONATOR	
WR1		WJV0039-001A	E-PRIMARY WIRE,JP2001/2002-JP2003/2004	
△ J101		QAB0050-001	LI BATTERY	
J504		LY31356-002A	JACK UNIT	
J505		QND0068-001	S JACK,E,F,G,H	
CN1		QGF0508F1-10X	FPC CONNECTOR	
CN2		QGF0508F1-14X	FPC CONNECTOR	
CN3		QGF0505F2-18X	FPC CONNECTOR	
CN4		QGA1201F2-02X	CONNECTOR	
CN5		QGF0508F1-11X	FPC CONNECTOR	
CN7		QGF0508F1-11X	FPC CONNECTOR	
CN8		QGA1201C2-02X	CONNECTOR	
CN12		QGA1201F2-03X	CONNECTOR	
CN13		QGF0507F3-14X	FFC/FPC CONNECTOR,G	
		QGF0507F4-14X	FFC/FPC CONNECTOR,A,B,C,D,E,F,H	
CN15		QGF0507F3-22X	FFC/FPC CONNECTOR	
CN18		QGF0507F3-12X	FFC/FPC CONNECTOR,G	
		QGF0507F4-12X	FFC/FPC CONNECTOR,A,B,C,D,E,F,H	
CN22		QGF0508F1-14X	FPC CONNECTOR	
CN25		QGB0506L1-30X	CONNECTOR	
CN28		QGA1002F1-13X	CONNECTOR	
△ F6001		NMFZ007-2R0X-K	FUSE	T2.0A,50V
△ F6002		NMFZ007-1R25X-K	FUSE	T1.2A,50V
△ F6004		NMFZ007-R40X-K	FUSE	T0.4A,50V
△ F7301		NMFZ010-R50X-A	FUSE	T0.5A
OT1		LY30016-049A	SPACER-A	
OT2		PU59915-105	#500SPACER0.01	
SD1		LY43421-001A	SHIELD PLATE	

CCD BOARD ASSEMBLY <02>

PW2	YB10356A2-01	CCD BOARD ASSY	
Q5301	2SC3931/CD/-X	TRANSISTOR	
	or 2SC4774/RS/-X	TRANSISTOR	
R5301	NRSA63J-105X	MG RESISTOR	1MΩ,1/16W
R5302	NRSA63J-562X	MG RESISTOR	5.6kΩ,1/16W
C5301	NCF31EZ-104X	CAPACITOR	0.1μF,25V
C5302	NBP21EM-155X	T CAPACITOR	1.5μF,25V
C5303	NCB31HK-152X	CAPACITOR	0.0015μF,50V

#	△ REF No.	PART No.	PART NAME, DESCRIPTION	
C5304		NCF31EZ-104X	CAPACITOR	0.1μF,25V
C5305		NDC31HJ-270X	CAPACITOR	27pF,50V
CN5301		QGF0505F1-14X	FPC CONNECTOR	

E.VF BOARD ASSEMBLY <60>

PW	LY41289-006A	E.VF BOARD ASSY	
IC7001	BA7149F-XE	IC	
Q7001	2SD968A(RS)	PH TRANSISTOR	
Q7002	2SA1748(QR)	PH TRANSISTOR	
Q7003	2SA1748(QR)	PH TRANSISTOR	
D7001	MA142WA	DIODE	
R7002	NRSA02J-3R9X	MG RESISTOR	3.9Ω,1/10W
R7003	NRVA02D-183X	CMF RESISTOR	18kΩ,1/10W
R7005	NRSA02J-102X	MG RESISTOR	1kΩ,1/10W
R7006	NRSA02J-113X	MG RESISTOR	11kΩ,1/10W
R7007	NRSA02J-330X	MG RESISTOR	33Ω,1/10W
R7008	NRSA02J-394X	MG RESISTOR	390kΩ,1/10W
R7009	NRSA02J-103X	MG RESISTOR	10kΩ,1/10W
R7010	NRVA02D-104X	CMF RESISTOR	100kΩ,1/10W
R7011	NRSA02J-223X	MG RESISTOR	22kΩ,1/10W
R7012	NRSA02J-221X	MG RESISTOR	220Ω,1/10W
R7013	NRSA02J-102X	MG RESISTOR	1kΩ,1/10W
R7014	NRSA02J-472X	MG RESISTOR	4.7kΩ,1/10W
R7015	NRSA02J-223X	MG RESISTOR	22kΩ,1/10W
R7016	NRSA02J-122X	MG RESISTOR	1.2kΩ,1/10W
R7017	NRSA02J-472X	MG RESISTOR	4.7kΩ,1/10W
R7018	NRSA02J-223X	MG RESISTOR	22kΩ,1/10W
R7019	NRSA02J-120X	MG RESISTOR	12Ω,1/10W
R7020	NRSA02J-685X	MG RESISTOR	6.8MΩ,1/10W
R7021	NRSA02J-475X	MG RESISTOR	4.7MΩ,1/10W
R7022	NRSA02J-475X	MG RESISTOR	4.7MΩ,1/10W
R7023	NRSA02J-564X	MG RESISTOR	560kΩ,1/10W
R7024	NRSA02J-105X	MG RESISTOR	1MΩ,1/10W
R7025	NRSA02J-275X	MG RESISTOR	2.7MΩ,1/10W
R7026	NRSA02J-275X	MG RESISTOR	2.7MΩ,1/10W
VR7001	NVP0001-221X	TRIM RESISTOR,V.SIZE	
VR7002	NVP0001-225X	TRIM RESISTOR,BRIGHT	
VR7003	PERE0595-565	V RESISTOR,FOCUS	
C7001	QFV11HJ-104A	F CAPACITOR	0.1μF,50V
C7002	QEDP1AM-227	E CAPACITOR	220μF,10V
C7003	QEDP1AM-227	E CAPACITOR	220μF,10V
C7004	QEDP1AM-227	E CAPACITOR	220μF,10V
C7005	NCF21CZ-105X	CAPACITOR	1μF,16V
C7006	NCB21HK-152X	CAPACITOR	0.0015μF,50V
C7007	NCB11CK-105X	CAPACITOR	1μF,16V
C7008	NCF21CZ-105X	CAPACITOR	1μF,16V
C7009	PECA1131-A107	E CAPACITOR	100μF,10V
C7010	CM316UJ472J100A	CAPACITOR	
C7011	NDC21HJ-180X	CAPACITOR	18pF,50V
C7012	QKCC1HM-105Z	E CAPACITOR	1μF,50V
C7013	NCF21HZ-104X	CAPACITOR	0.1μF,50V
C7014	NCF21HZ-104X	CAPACITOR	0.1μF,50V
C7015	QCZ0212-151	CAPACITOR	150pF,1kV
C7016	PECA1006	CAPACITOR	330pF,500V
L7001	QQR0970-001	LINEARITY COIL	
L7002	PU49994-220	COIL	22μH
L7003	PELN1101-680JY	COIL	68μH
△ T7001	QQH0011-002	FB TRANSF	
CN7001	B4B-ZR	CAP HOUSING	
CN7002	WJK0095-002A	WIRE ASSY	
OT1	PU59915-105	SPACER#500,for L7001	